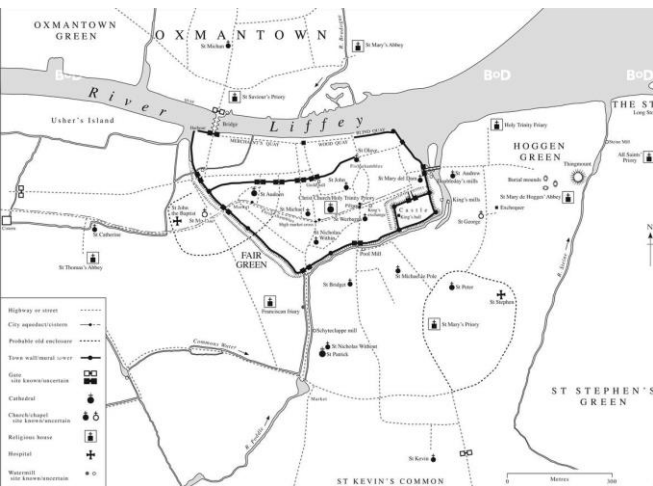
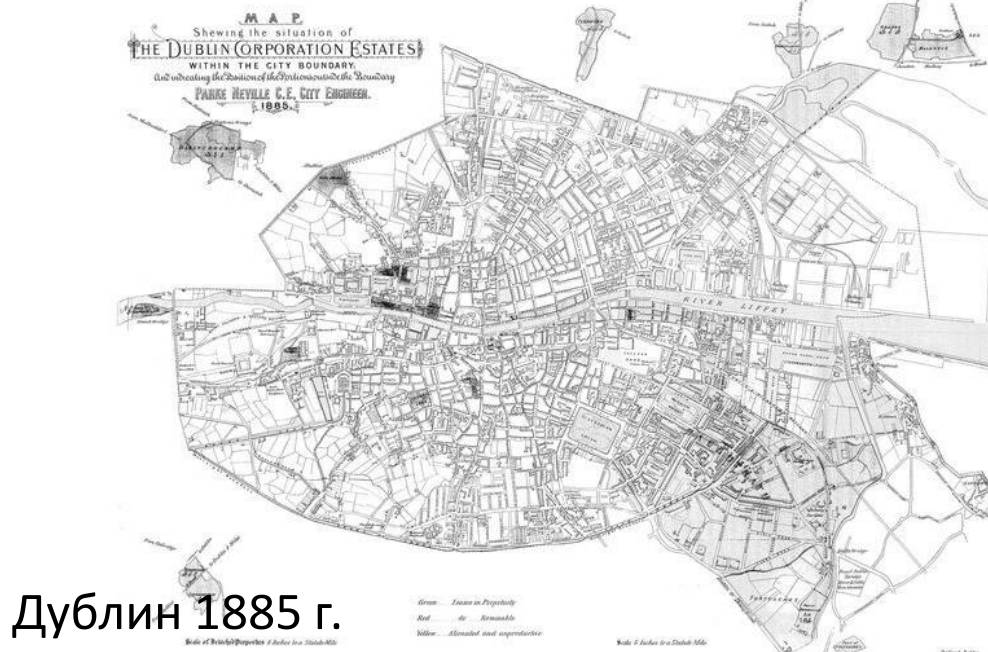
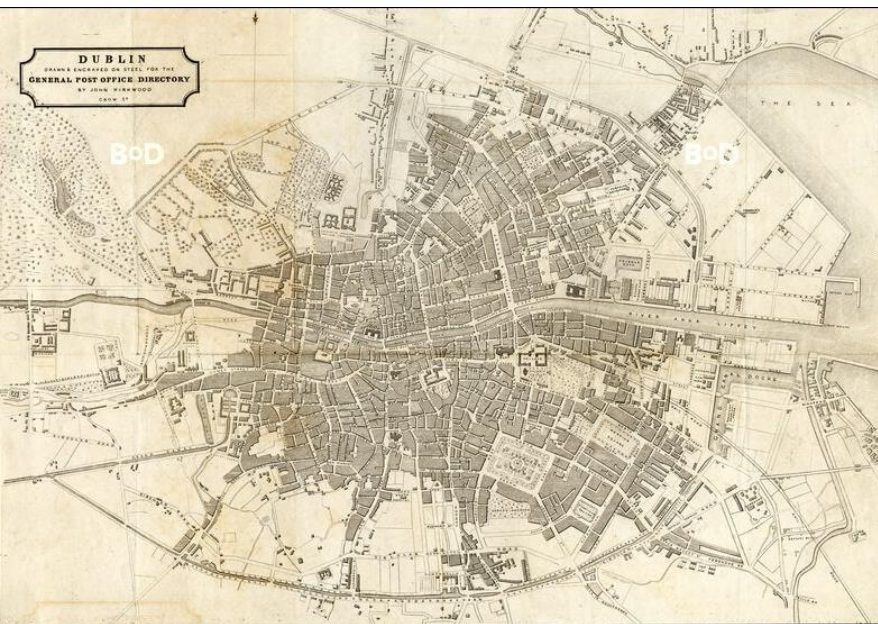
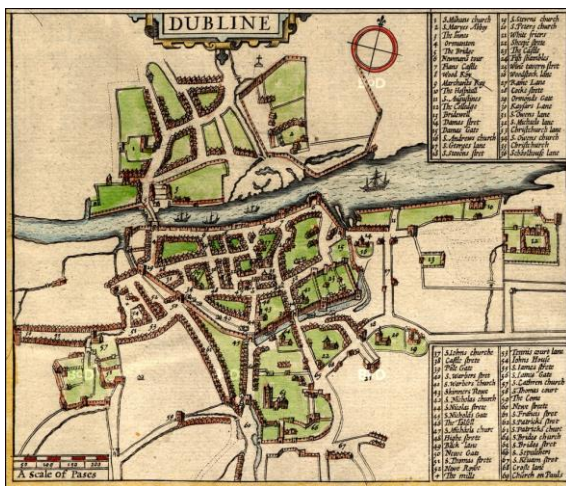




ТРАСПОРТНАЯ СИСТЕМА г.ДУБЛИН



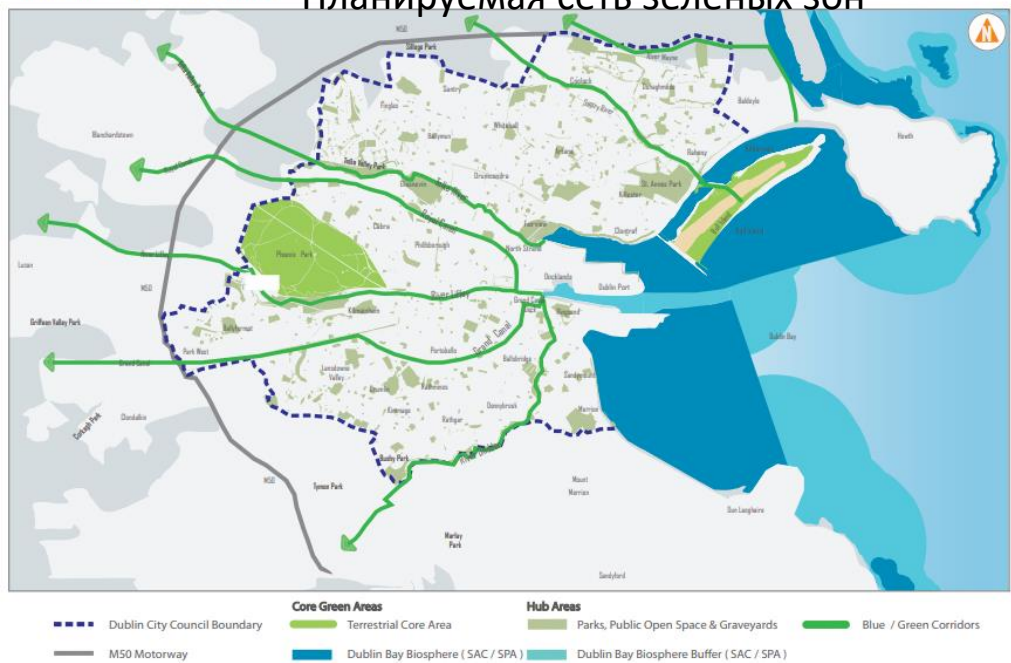
Дублин 1300 г.



Дублин 1885 г.

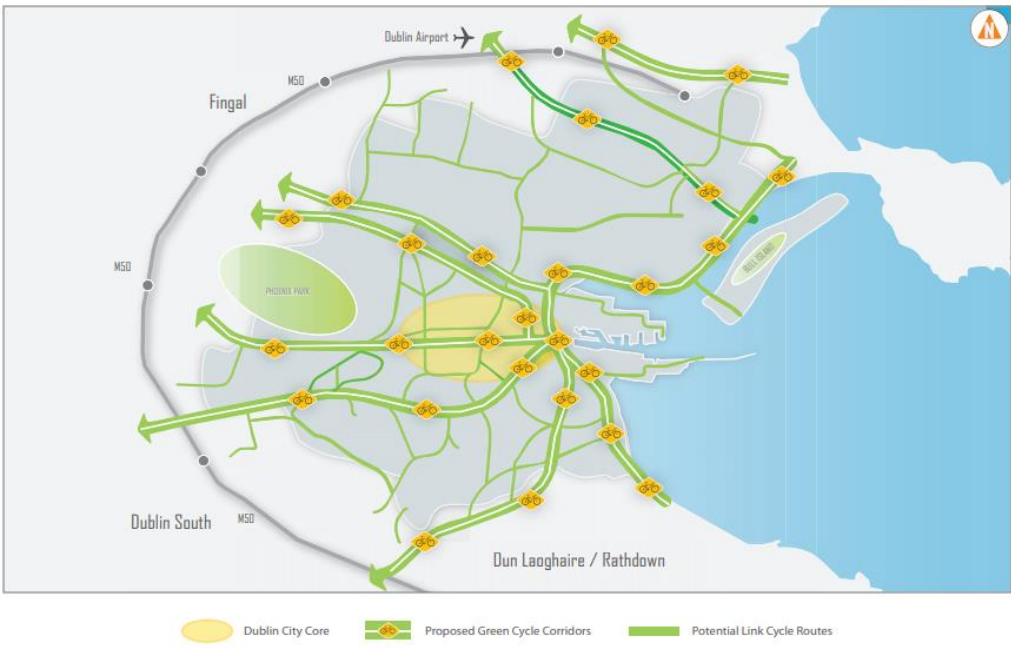


Fig.14 Strategic Green Network Планируемая сеть зеленых зон



Планируемая сеть велосипедного движения

Fig.11 Dublin City Green Cycle Network



Автомобильное движение

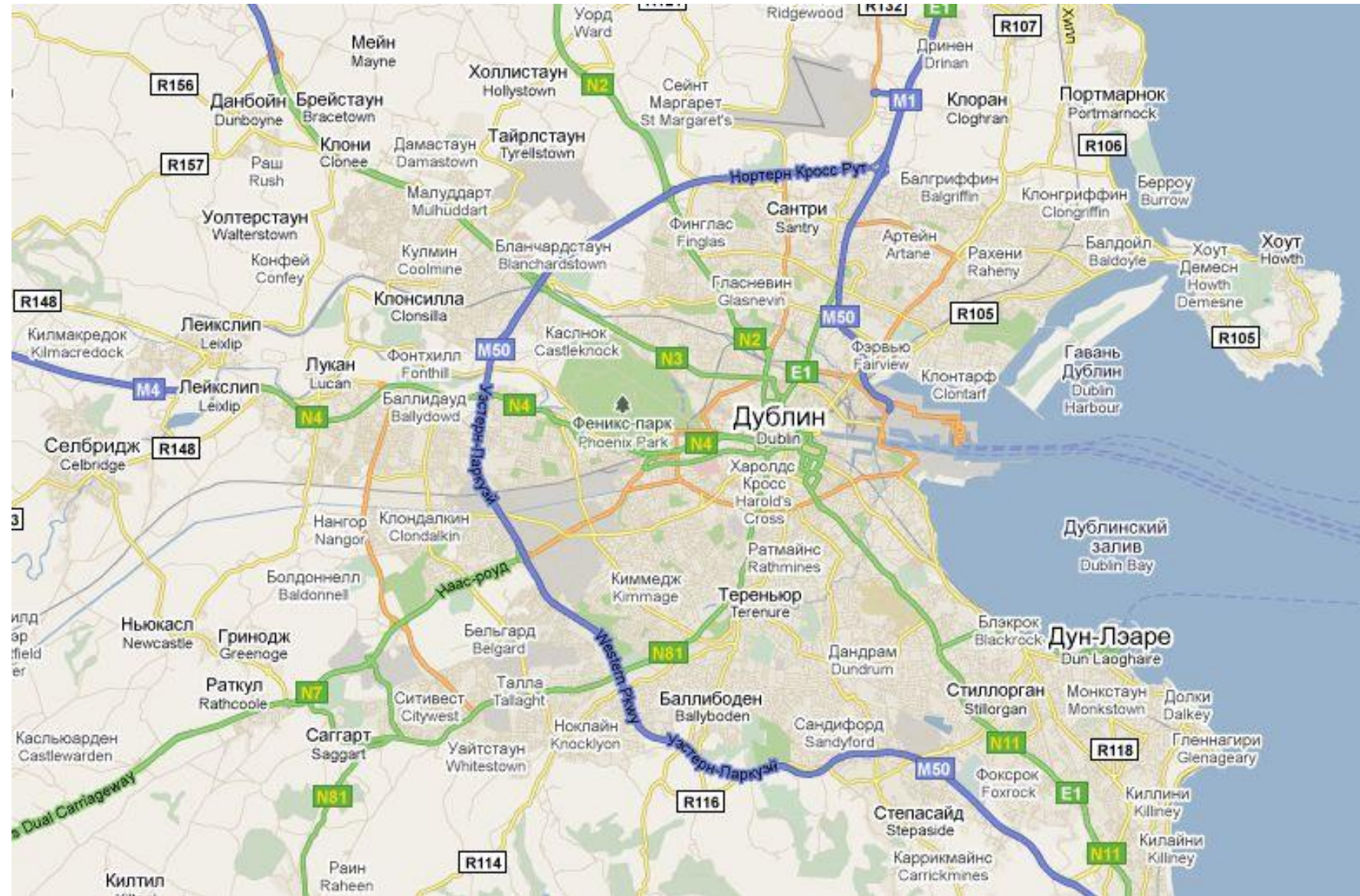
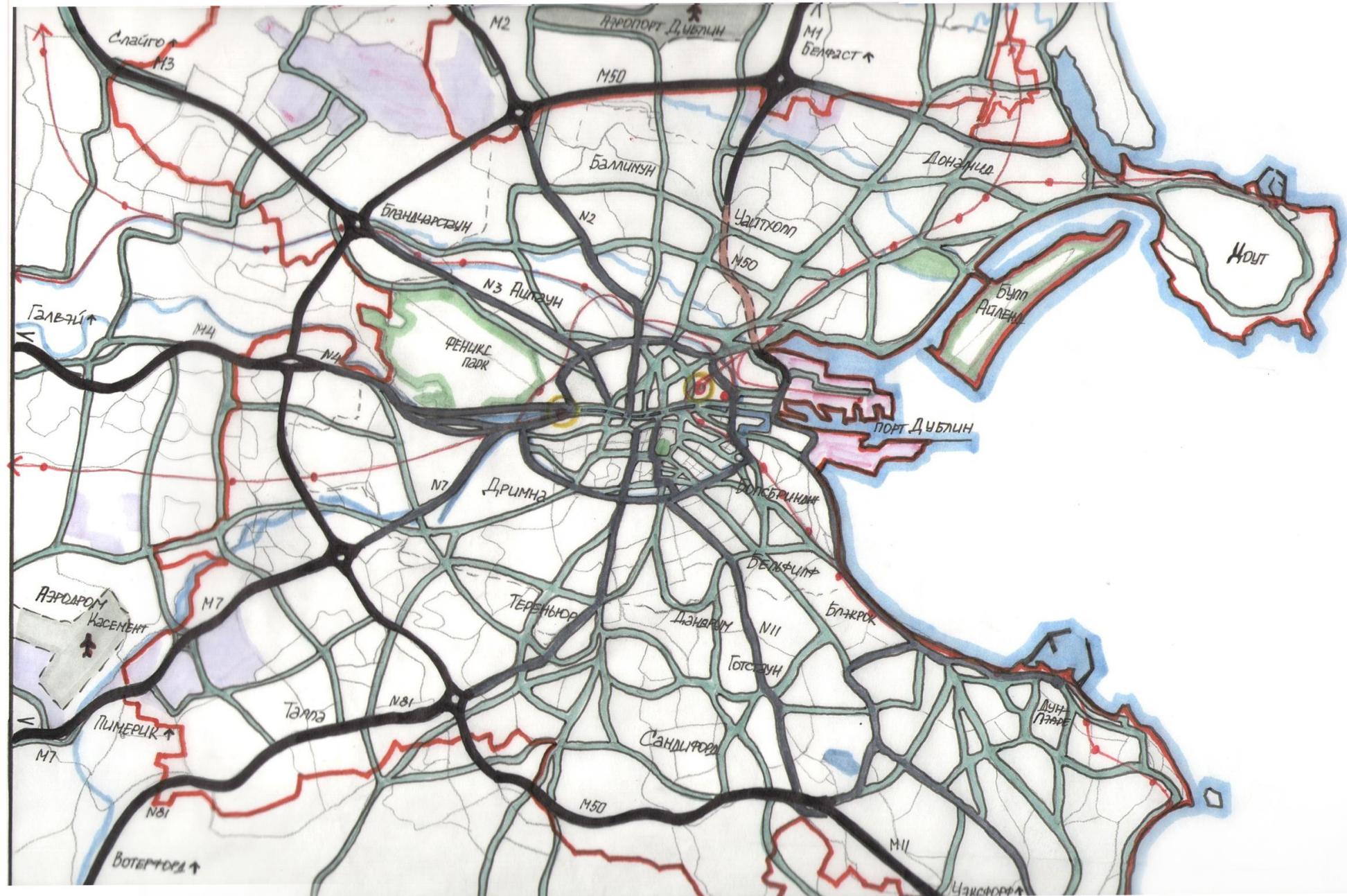
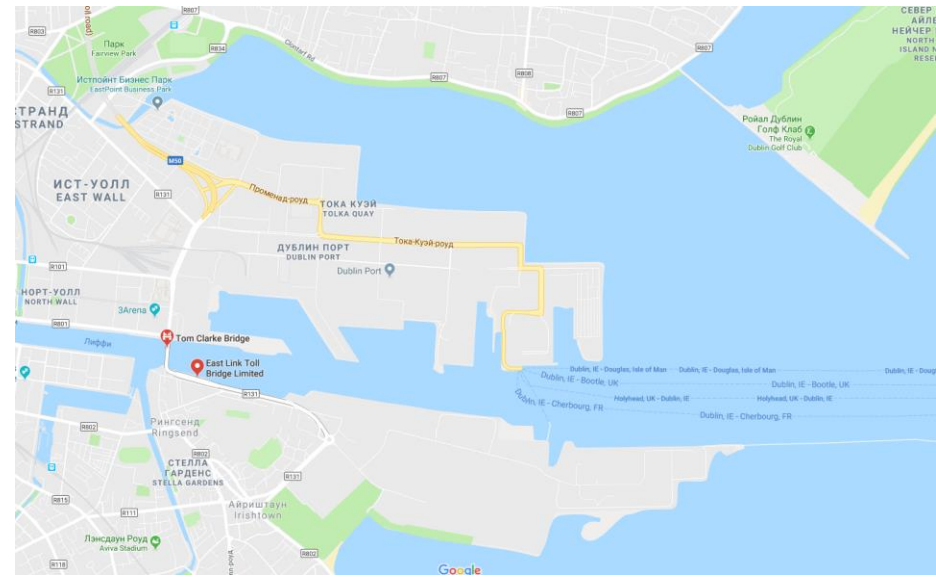
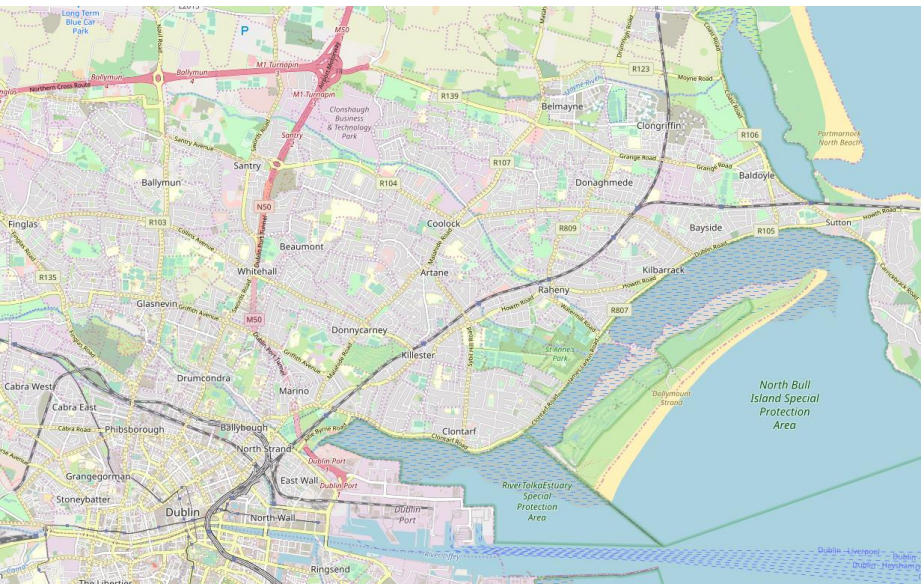


Схема автомобильного движения

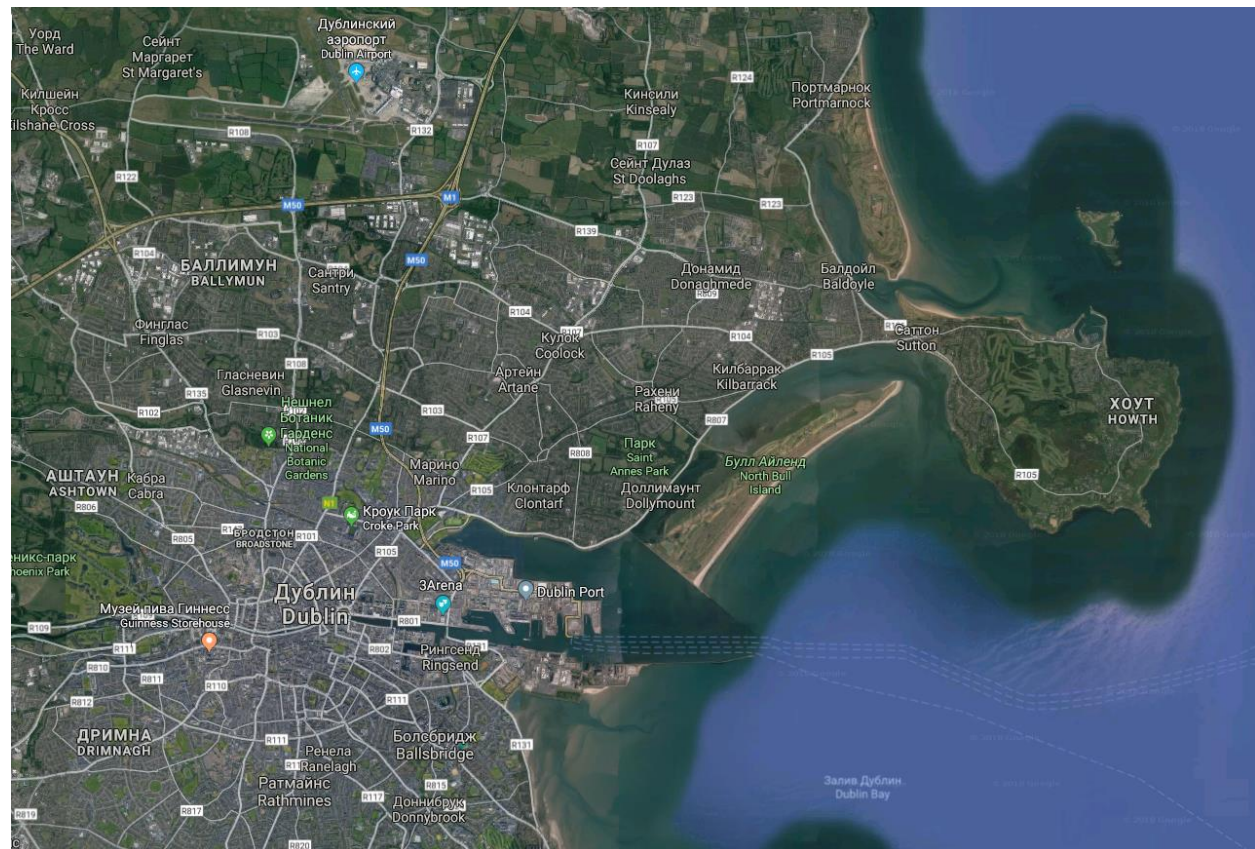


Условные обозначения:

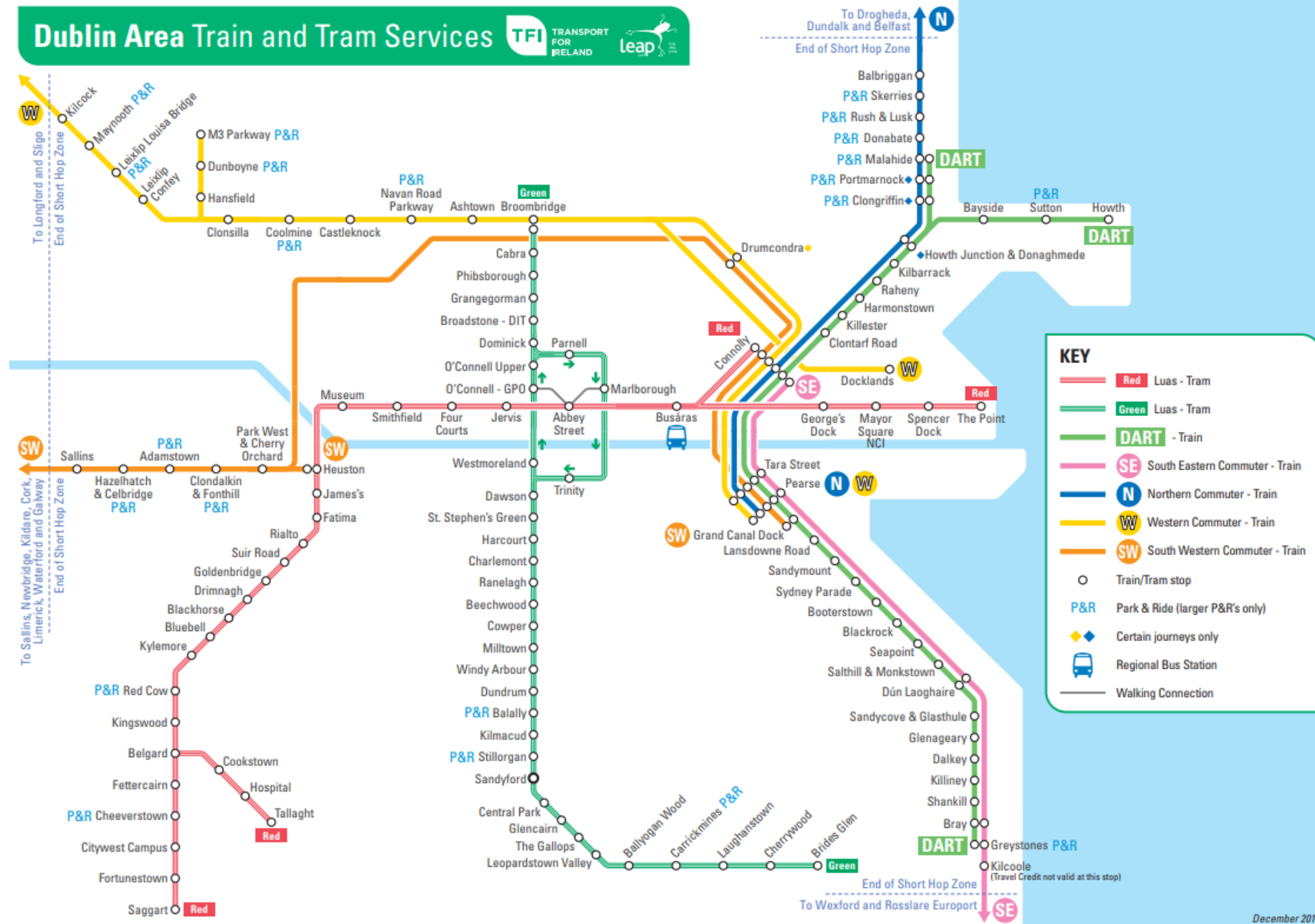
- АВТМАГИСТРАЛЬ НАЦИОНАЛЬНОГО ЗНАЧЕНИЯ
- АВТОДОРОГИ ГОРОДСКОГО ЗНАЧ.
- ГОРОДСКИЕ УЛИЦЫ
- ПРОЧЕ ДРОГИ
- M50 НОМЕР АВТМАГИСТРАЛЦ
- Слайго ↑ НАПРАВЛЕНИЕ
- ЖЕЛЕЗНАЯ ДОРОГА
- ТЕРРИТОРИЯ АЭРОПОРТА / АЭРОДРОМА
- ГРАНИЦА ГОРОДА
- ВОДНЫЕ ПРОСТРАНСТВА
- ВОКЗАЛ
- ПРИЗВУДИТЕЛЬНАЯ ЗОНА



Аэропорт Дублина

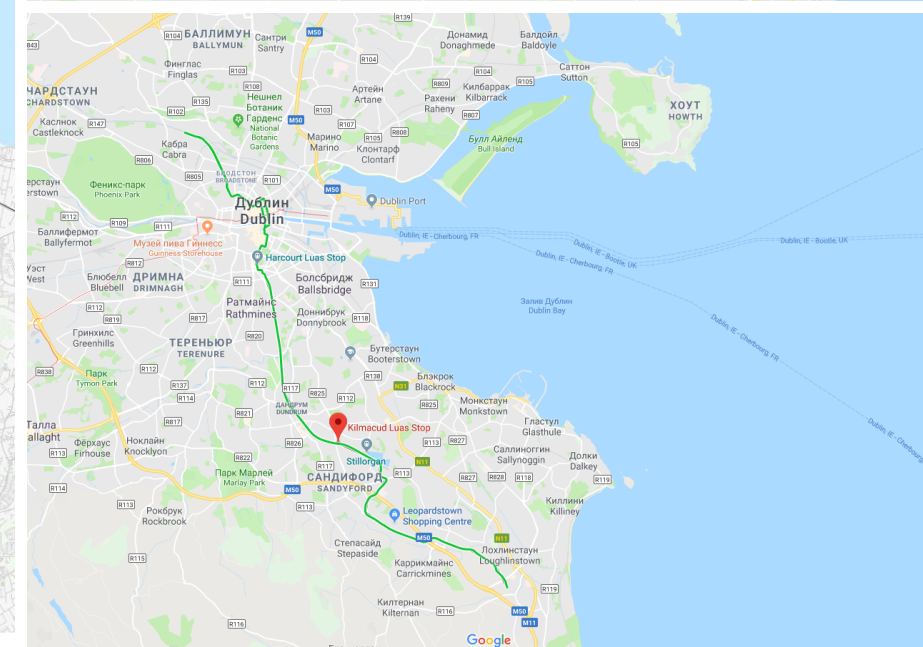
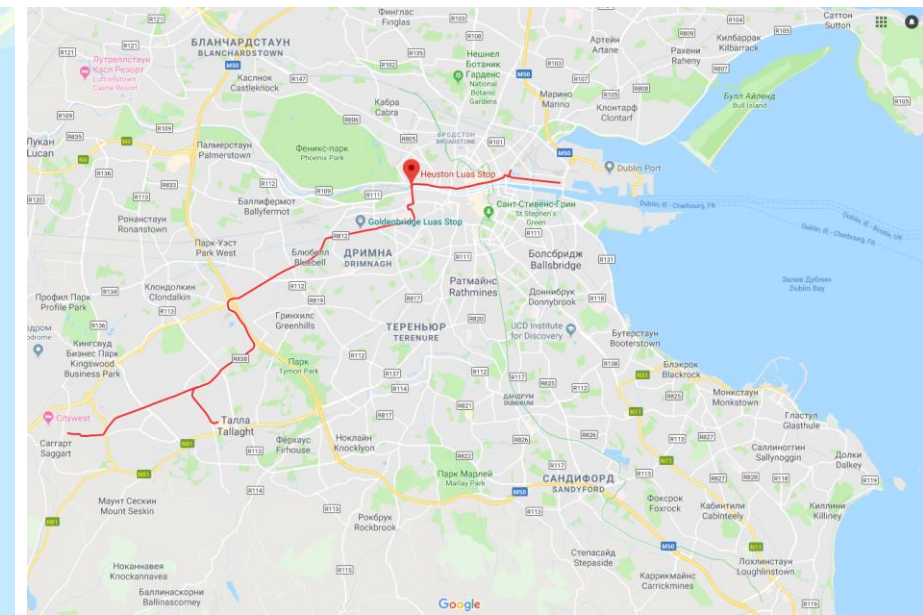
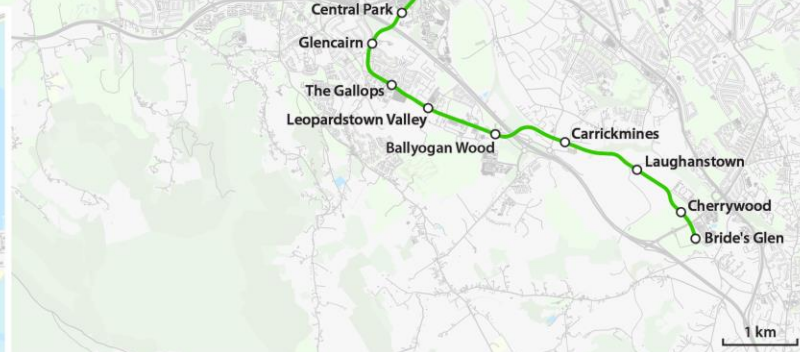
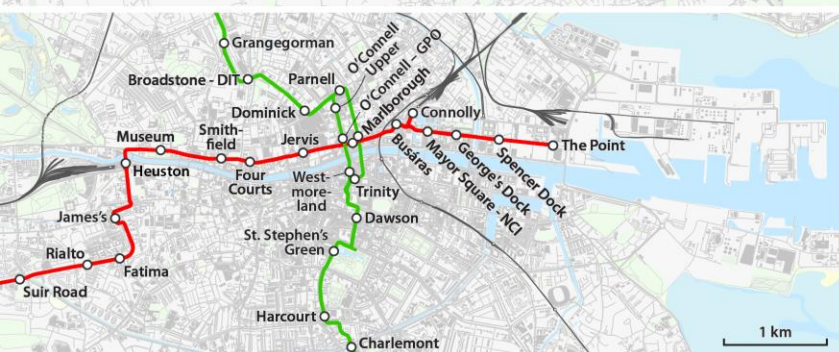
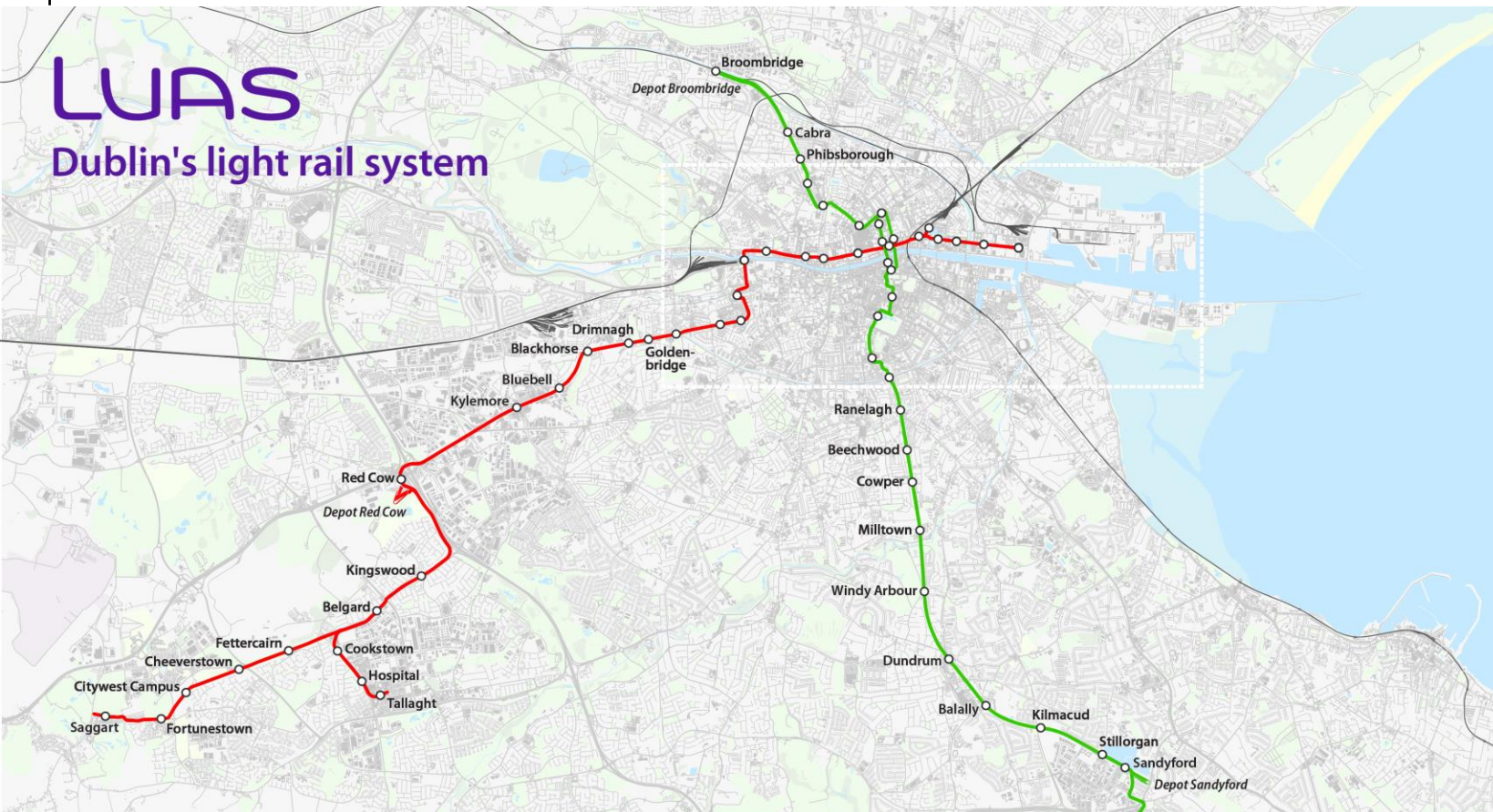


Общественный транспорт



Трамвай ЛУАС

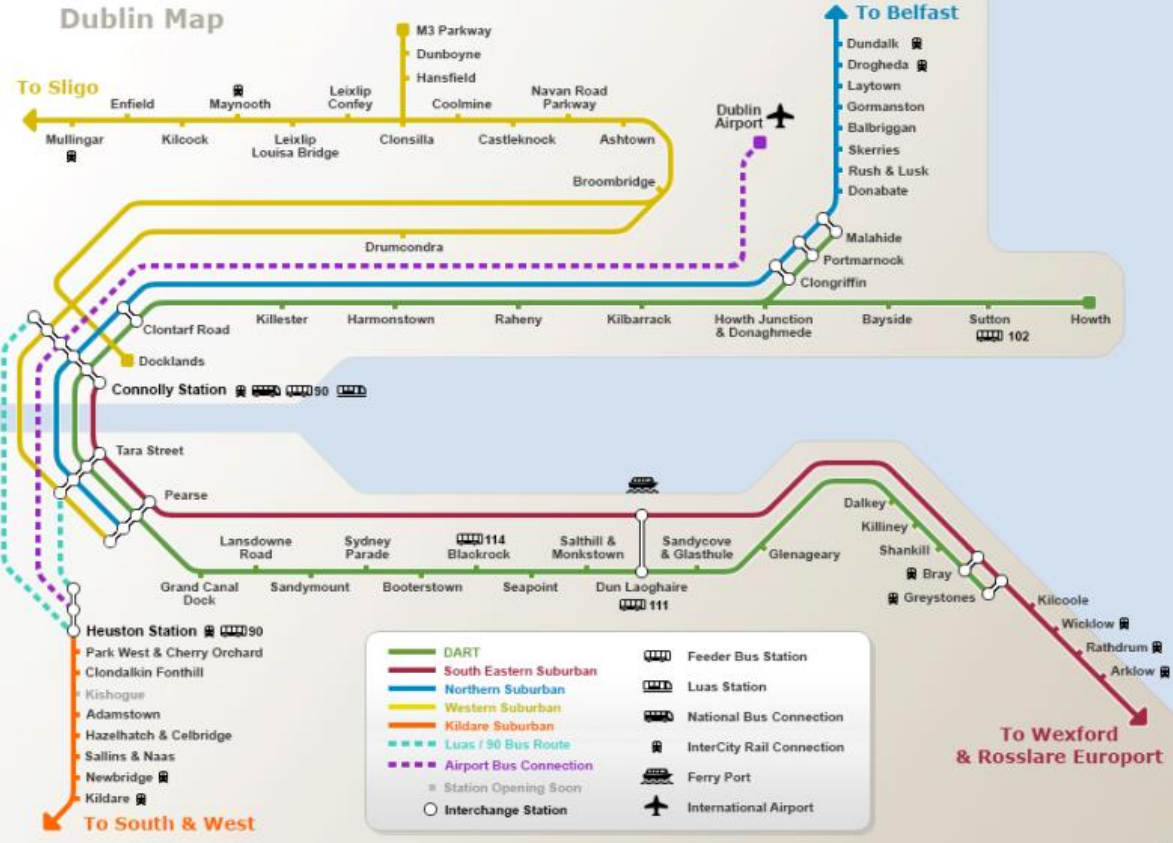
LUAS Dublin's light rail system



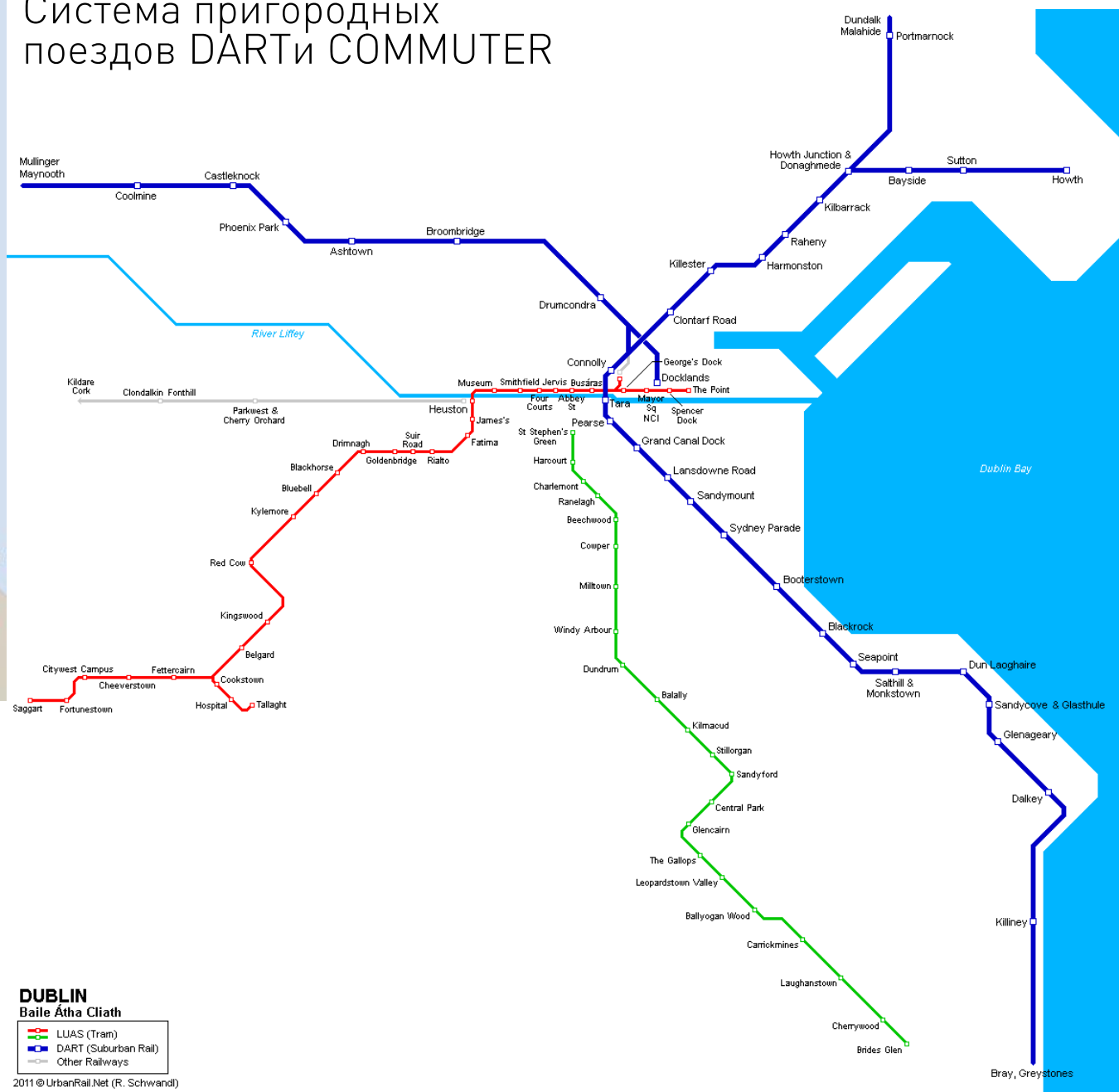
Трамвай ЛУАС



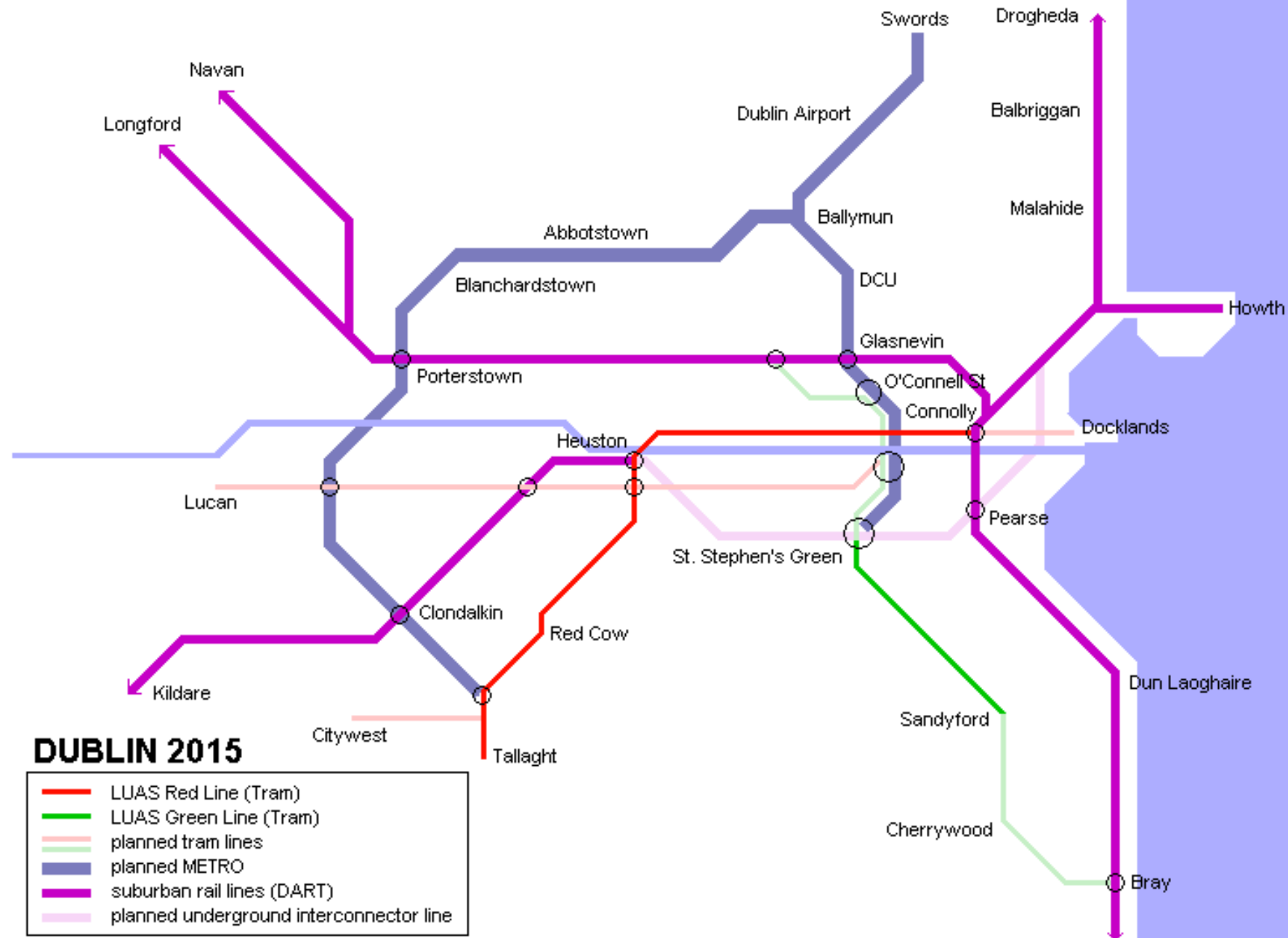
Dublin Map



Система пригородных поездов DART и COMMUTER



Метрополитен (планируемая сеть)



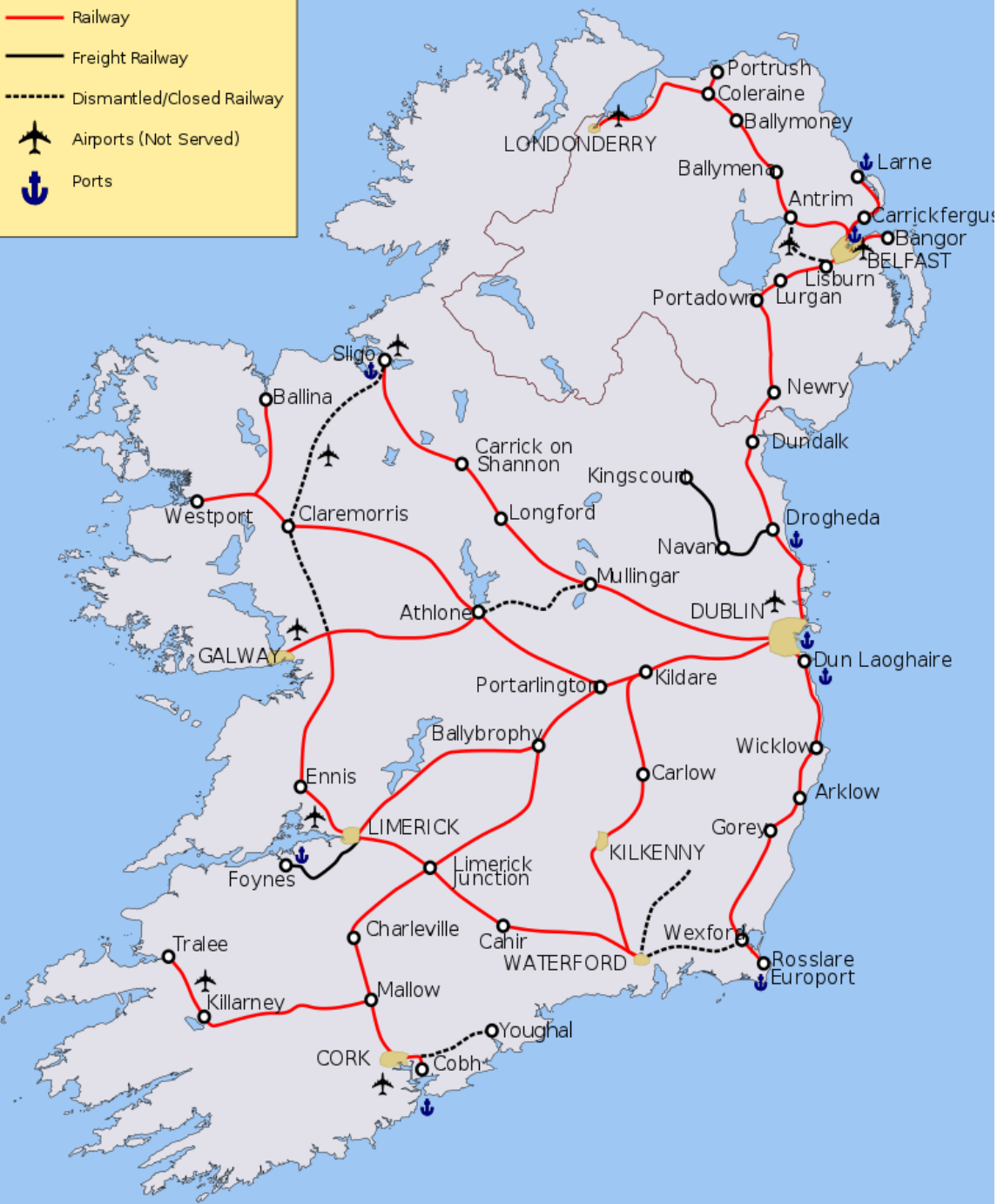
DUBLIN 2015

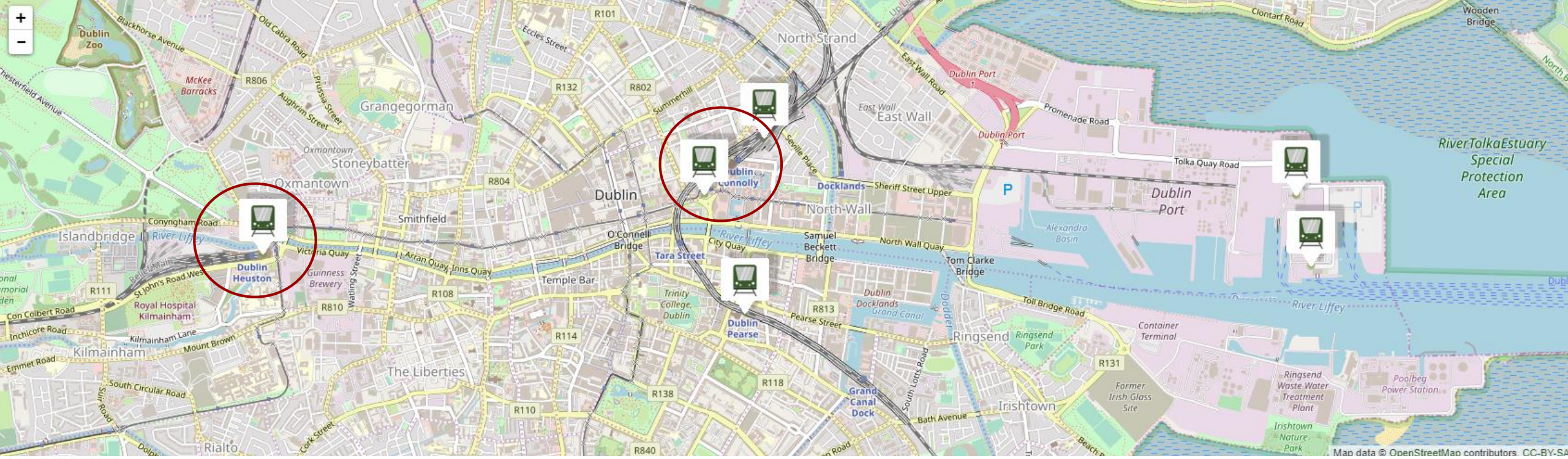
- LUAS Red Line (Tram)
- LUAS Green Line (Tram)
- planned tram lines
- planned METRO
- suburban rail lines (DART)
- planned underground interconnector line

Система железнодорожного сообщения

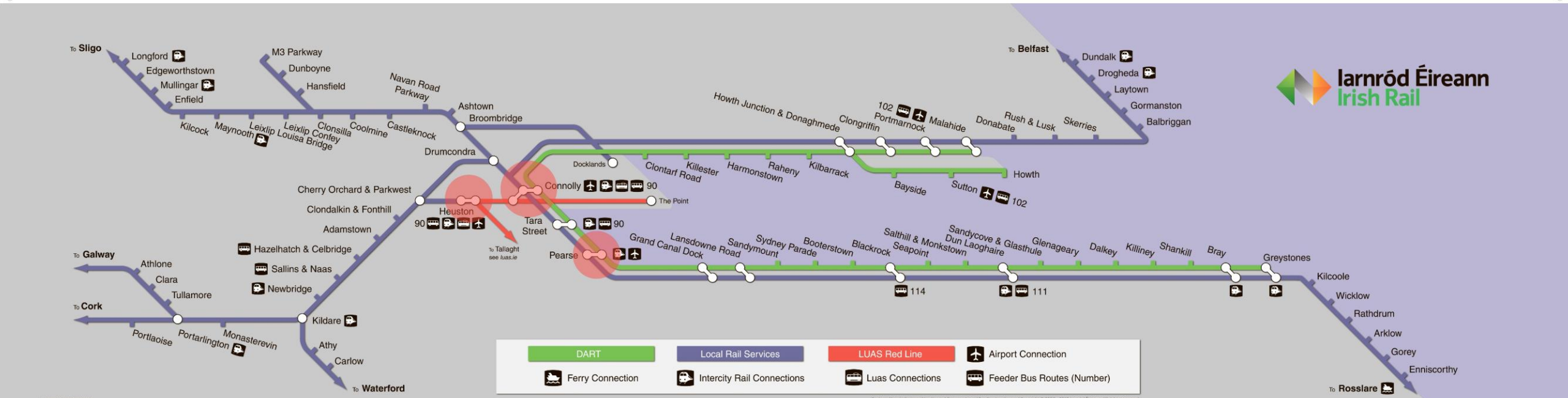


- Railway
- Freight Railway
- Dismantled/Closed Railway
- Airports (Not Served)
- Ports

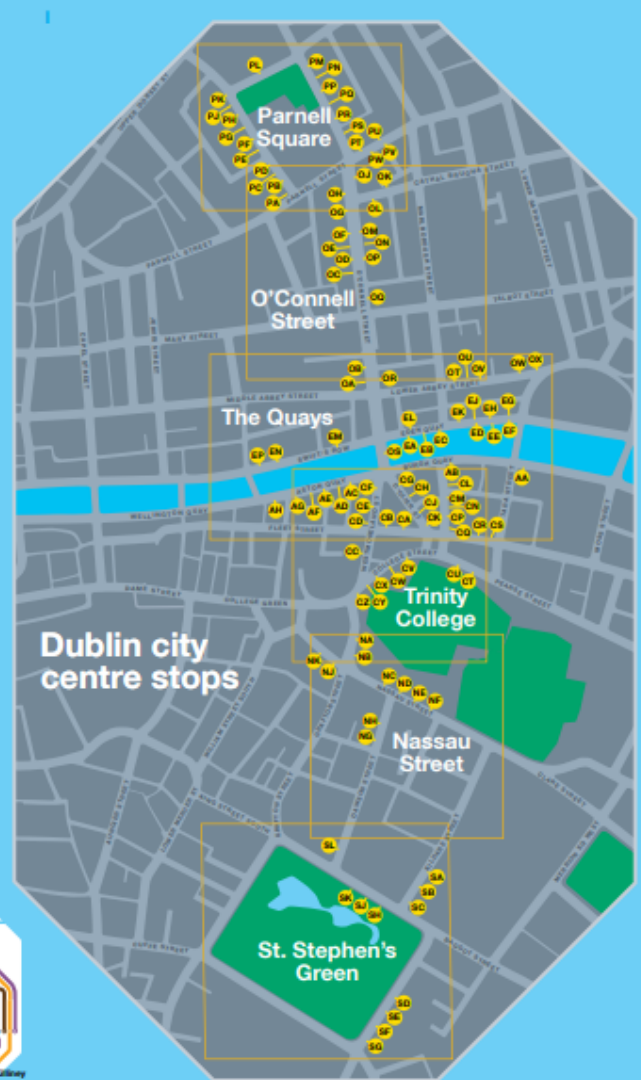
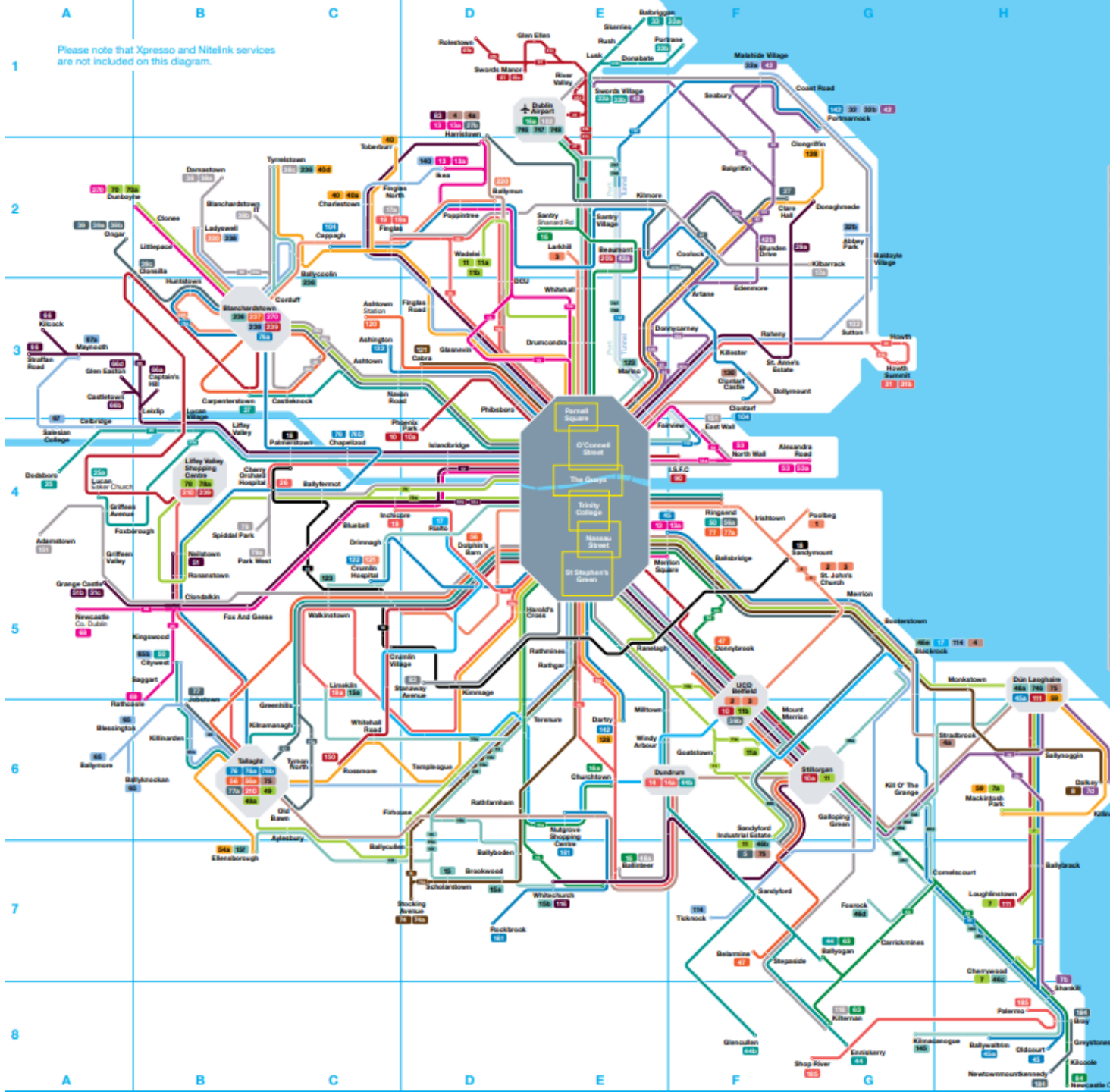




Map data © OpenStreetMap contributors. CC-BY-SA



Please note that Xpresso and Nitelink services are not included on this diagram.



Dublin city centre stops



Finding your stop
 Ag aimsiú do stad bus

Once you have found your destination in the index overlay you can locate the relevant city centre stops on the city centre map above and the relevant bus routes on the diagram to the left.

Nuair a aimsiú tú do cheann scribe ar an innéacs lastail is féidir leat stadanna ábhartha lár na cathrach a aimsiú ar Marscál lár na cathrach thuas agus na bealaí bus ábhartha a aimsiú ar an Marscál ar chúl.

BUS CONNECTS

TRANSFORMING CITY BUS SERVICES

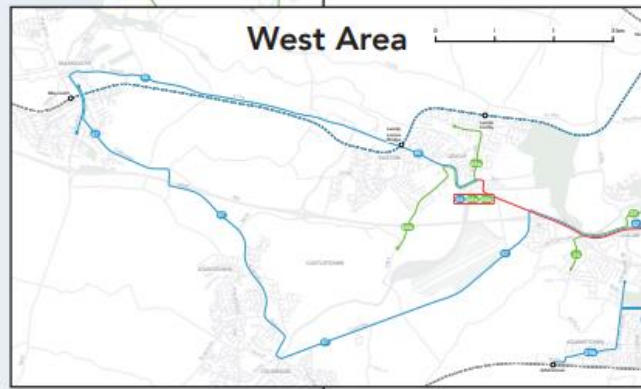
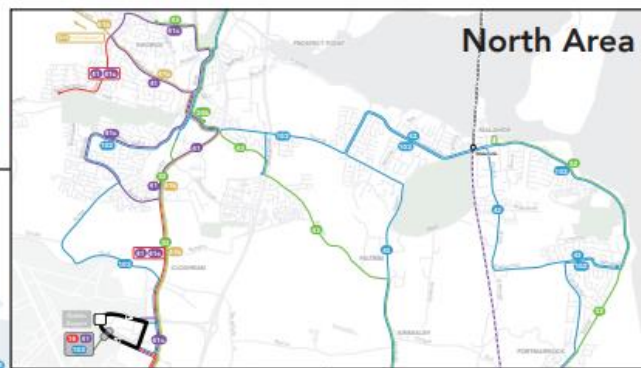
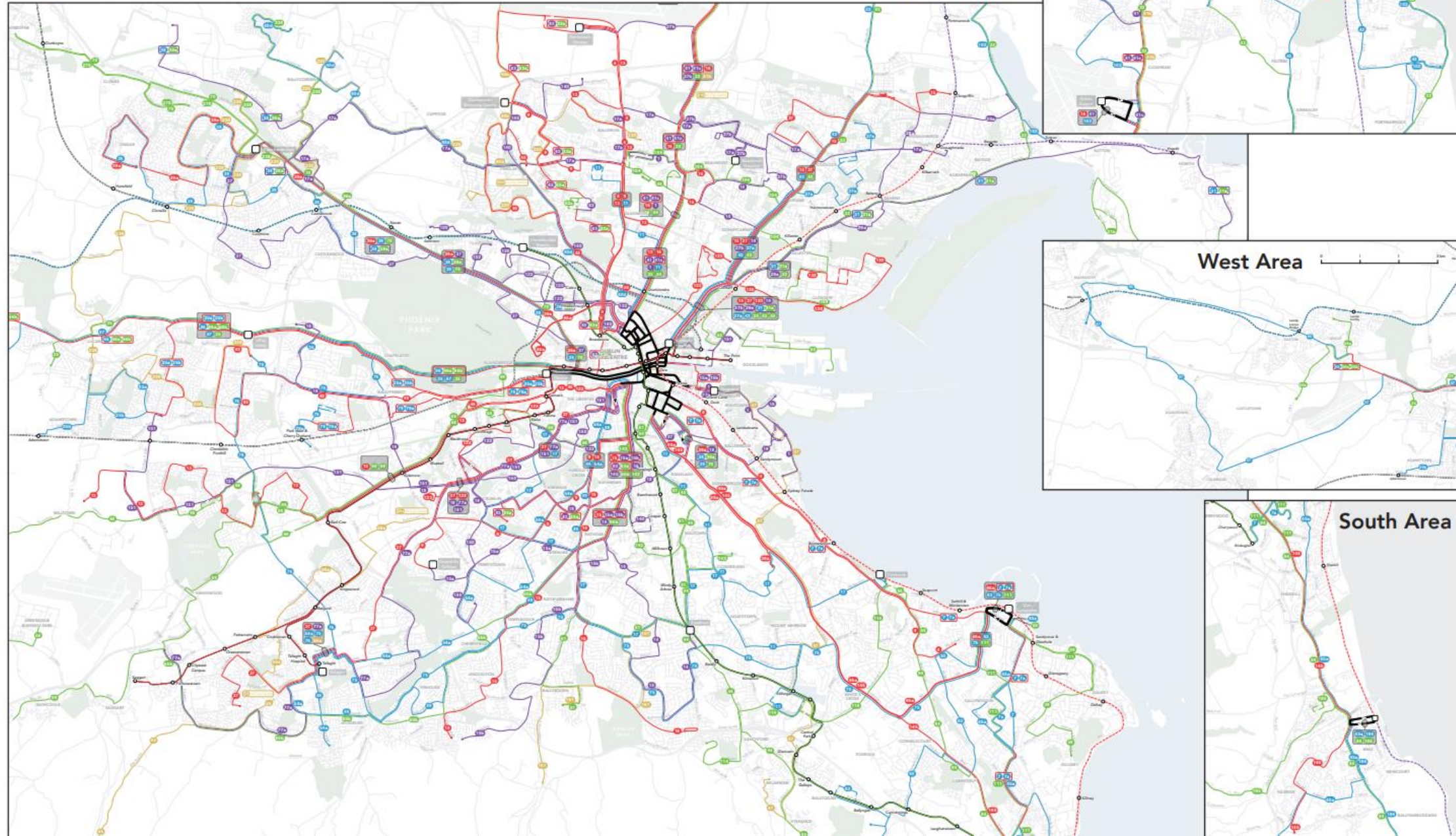
EXISTING PUBLIC TRANSPORT SERVICES

Weekday midday frequencies



- Every 5 min or better
- Every 6 to 7.5 min
- Every 7.5 min
- Every 10 - 15 min
- Every 20 - 25 min
- Every 30 min
- Every 40 min
- Every 60 min
- Less than hourly
- Line continues at lower frequency
- Combines for better frequency
- Multiple lines & frequencies
- Luas Every 15 min or better
- DART Every 10 min
- Every 20 min
- Commuter rail
- Every 30 min
- Worse than 30 min

Note: This map does not show peak-only services.



BUS CONNECTS

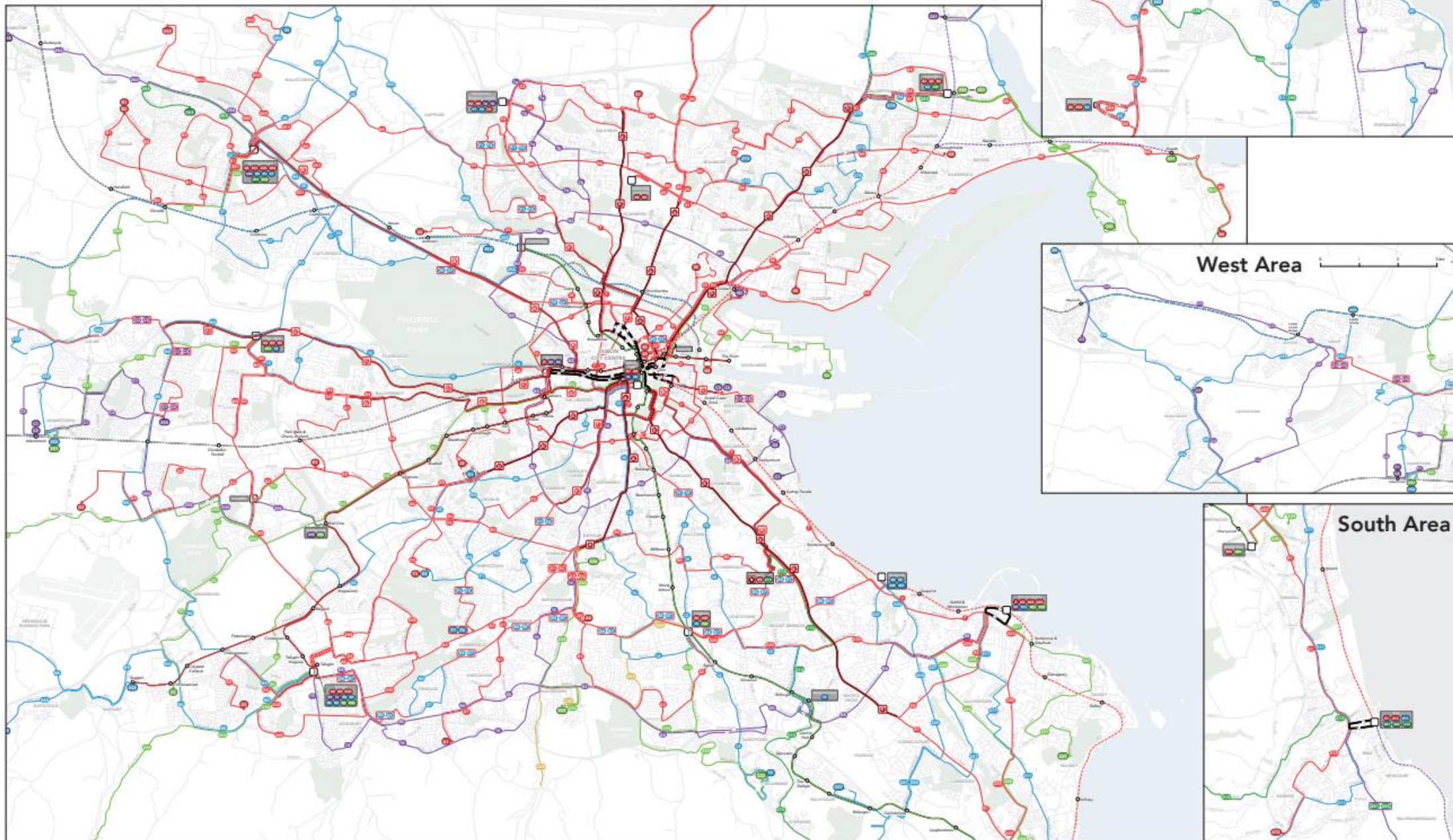
TRANSFORMING CITY BUS SERVICES

PROPOSED PUBLIC TRANSPORT SERVICES

Weekday midday frequencies

- | | | | |
|-----------------------|-----------------------------------|-------------------------------|------------------------------|
| Every 5 min or better | Every 60 min | Less than hourly | Lanes Every 15 min or better |
| Every 6 to 7.5 min | Line continues at lower frequency | Combines for better frequency | DART Every 10 min |
| Every 7.5 min | Every 20 - 25 min | Multiple lines & frequencies | Every 20 min |
| Every 10 - 15 min | Every 30 min | | Commuter rail |
| Every 20 - 25 min | Every 40 min | | Every 30 min |
| Every 30 min | | | Worse than 30 min |

Note: This map does not show peak-only services.

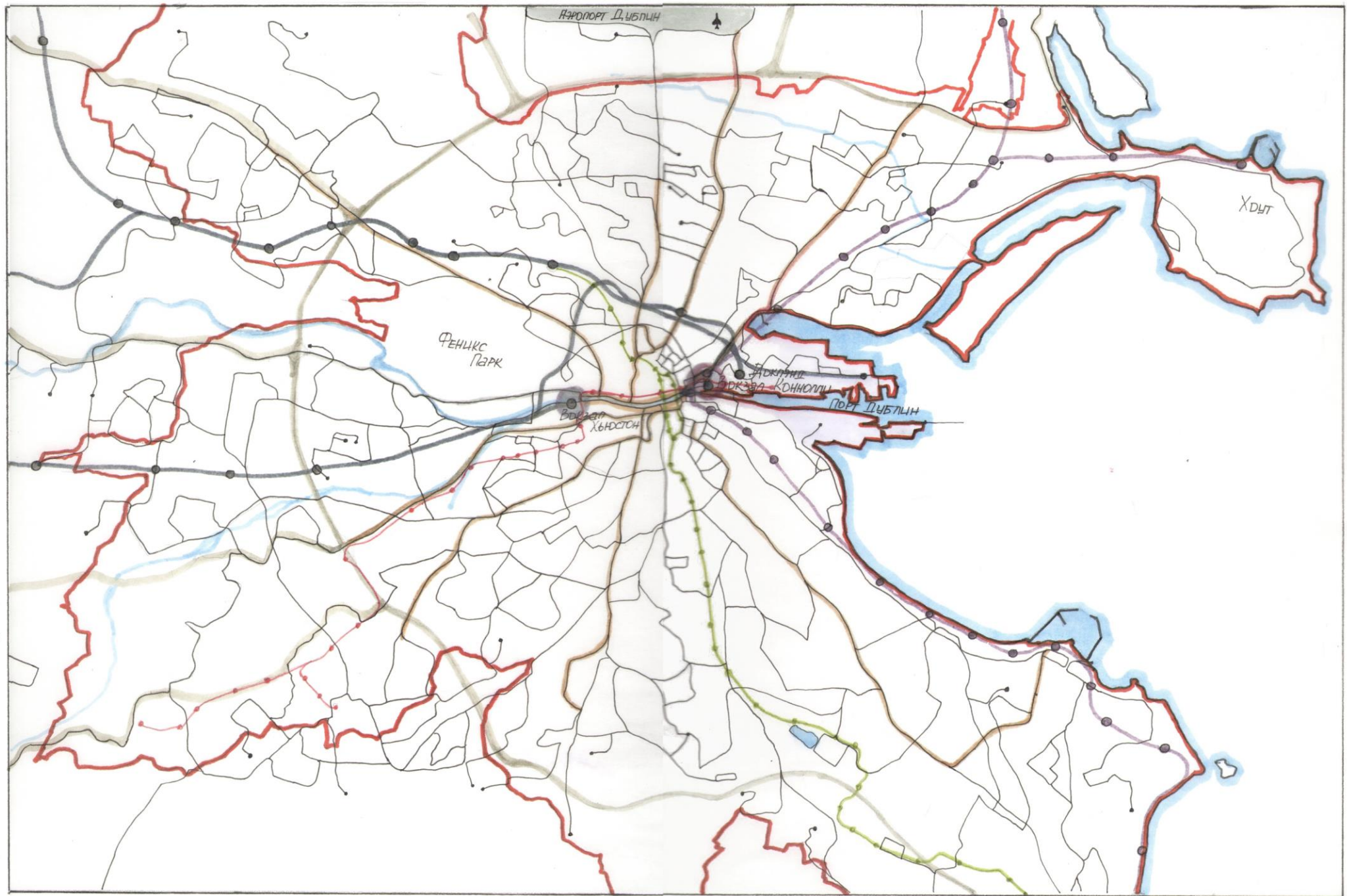


North Area

West Area

South Area

PROPOSED NETWORK



Условные обозначения

- ЛУАС зелёная линия
- ЛУАС красная линия
- Дарт (электричка)
- Комьютер (электричка)
- Дстановка пригород. поезда
- Автобус
- Автомагистралы
- Вокзал
- Аэропорт
- Порт
- Граница города
- Водные пространства